

Blackpool Victoria Hospital Emergency Department

Monthly Bulletin: January to December 2012

This bulletin provides a breakdown of all attendances¹ at Blackpool Victoria Hospital Emergency Department (ED) between January and December 2012.

Between January and December 2012 there were 82,124 attendances to Blackpool Victoria Hospital ED. The month with the highest attendances was July with 7,266 attendances (**Figure 1**). There were more male than female attendances presenting at Blackpool Victoria Hospital ED (males=41,458; 50%).

Figure 2 illustrates age group of ED attendances for each month. Over three in ten ED attendances were aged over 60 years old (n=27,246; 33%) and 30-59 years old (n=25,152; 31%). Most ED attendances were referred by an emergency call or ambulance (43%) or self-referred (39%) (**Table 1**).

Table 2 details the injury group of ED attendances. The majority (91%) of attendances were recorded as other (including other injury and medical attendances). Sports injury accounted for 2% of attendances, overdose and poisoning 2%, assaults 2% and road traffic collisions (RTC) 2%.

Table 3 shows the location of incident for ED attendances. It shows that over six in ten (63%) of incidents occurred in the home, and almost a fifth (17%) occurred in a public place.

The discharge destination for ED attendances is displayed in **Table 4**. It indicates that over half (55%) attendances were discharged. Almost three in ten (28%) of attendances were admitted into hospital and 10% were referred.

Assault attendances

Between January and December 2012 there were 1,637 assault attendances to Blackpool Victoria Hospital ED. The month with the highest attendances was July with 179 attendances (**Figure 3**). There were more male than female assault attendances presenting at Blackpool Victoria Hospital ED (males=1,209; 74%).

Table 5 details the age group of assault attendances for each month. The majority of ED assault attendances were aged 15-29 (n=897; 55%) and 39% were 30-59 years old (n=638).

Table 6 shows the location of incident for assault attendances. It shows that over half (54%) occurred in a public place, with almost a quarter (24%) occurring in the home.

Table 7 illustrates the discharge destination for assault attendances to Blackpool Victoria Hospital ED. Over two-thirds (68%) were discharged without follow-up treatment, whilst 13% required follow-up treatment. Almost one in twenty (4%) assault attendances were admitted to hospital.

Figure 1: Gender of ED attendances by month, January to December 2012

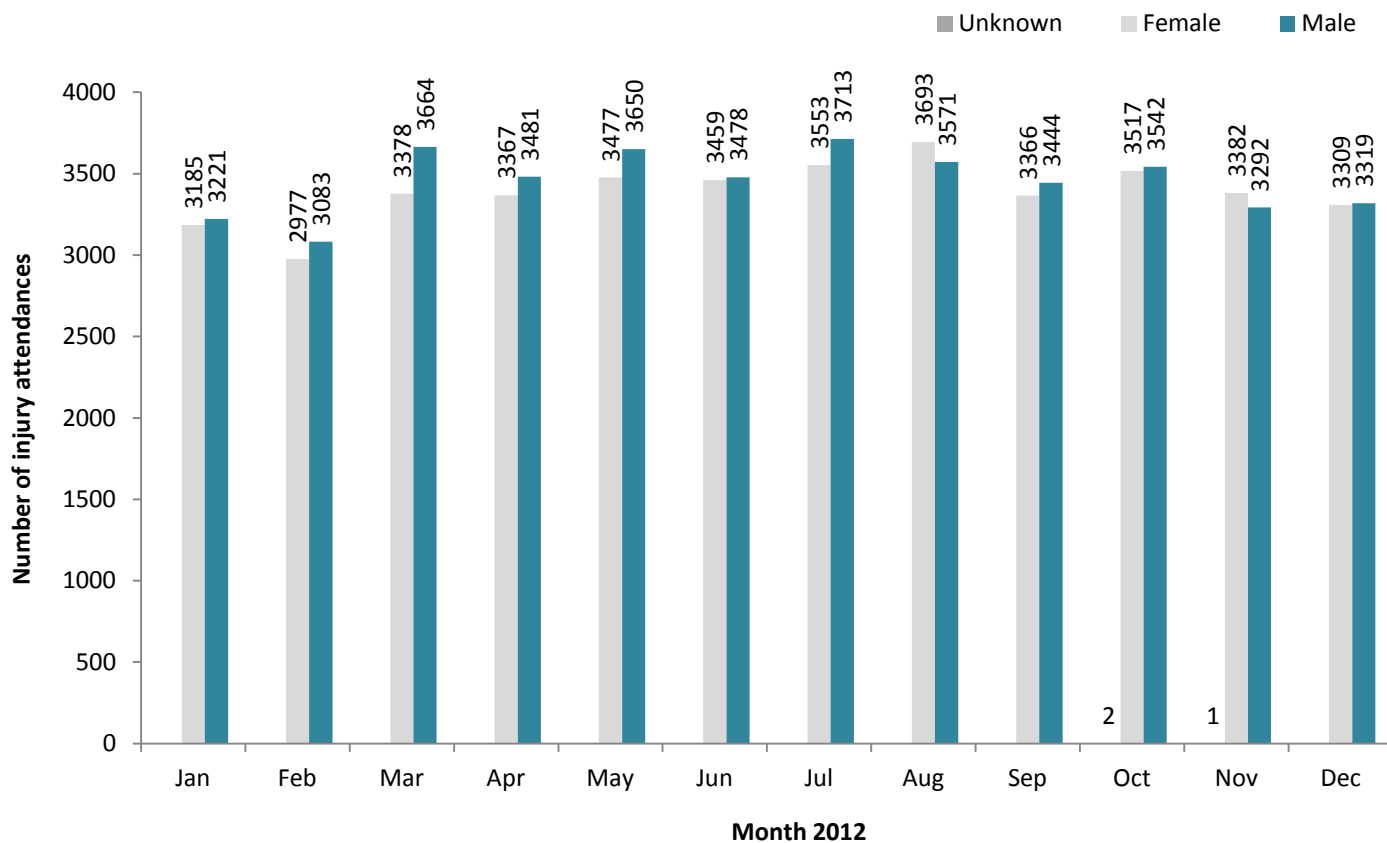


Figure 2: Age group of ED attendances by month, January to December 2012

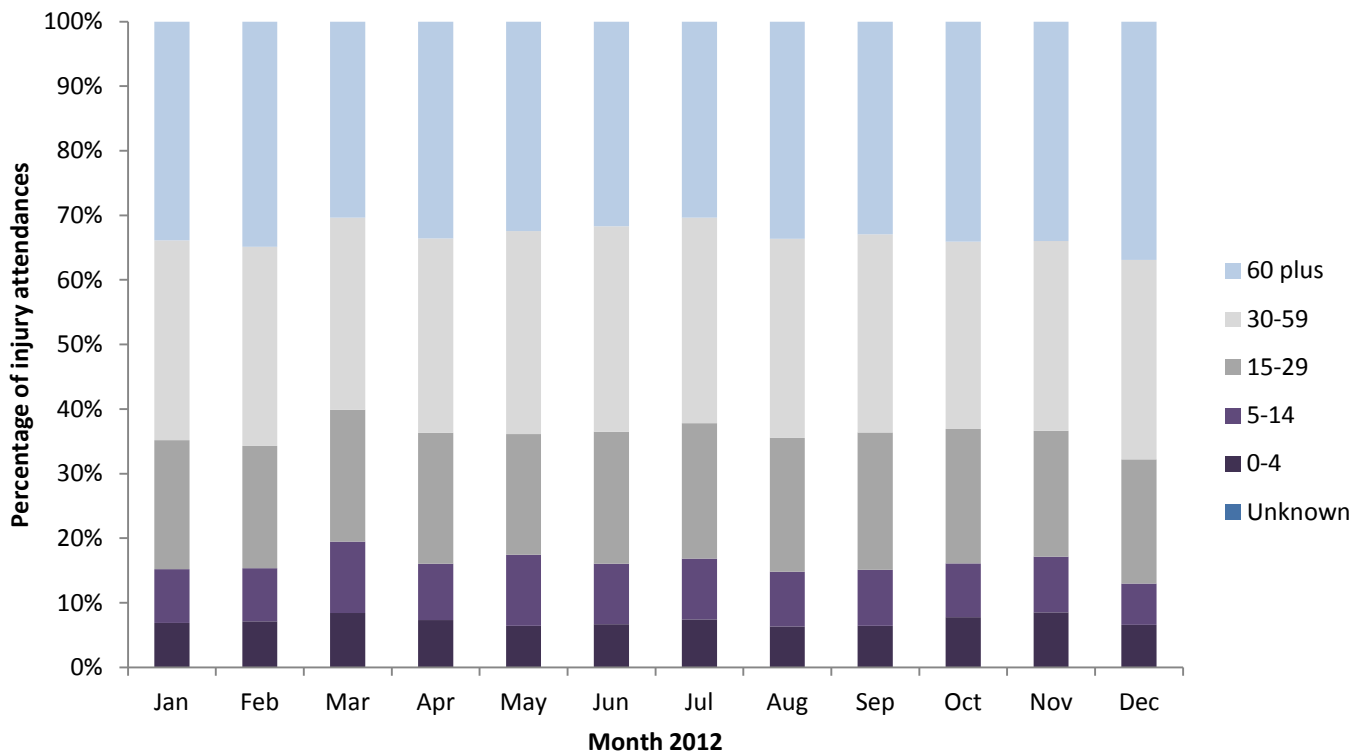


Table 1: ED attendances by source of referral and month, January to December 2012^{2,3,4}

Source of referral	Jan	Feb	Mar	Apr	May	Jun	Jul	Aug	Sep	Oct	Nov	Dec	Total	%
Emergency call/ambulance	2921	2710	2951	2838	2893	2874	3047	3141	2931	3074	3018	3242	35640	43
Self referral	2462	2209	2814	2722	2909	2789	2903	2889	2664	2771	2421	2249	31802	39
Health Care Provider: same or other	664	754	871	891	810	795	817	820	680	681	696	701	9180	11
GP	195	181	181	203	256	228	232	193	219	253	280	185	2606	3
Other referrer	55	67	56	82	89	92	78	88	106	86	91	93	983	1
Police	43	28	35	41	64	61	58	53	73	64	54	62	636	1
Employer	20	43	39	32	41	39	59	46	43	46	45	40	493	1
Educational establishment	28	41	61	<18	40	29	22	***	64	43	30	28	404	0
ED staff	18	26	32	22	25	30	50	33	29	43	39	28	375	0
LA/social services	***	***	***	***	***	***	***	***	***	***	***	***	***	0
Prison service	***	***	***	***	***	***	***	***	***	***	***	***	***	0
Total	6406	6060	7042	6848	7127	6937	7266	7264	6810	7061	6675	6628	82124	100

Table 2: ED attendances by injury group and month, January to December 2012^{5,*}

Injury group	Jan	Feb	Mar	Apr	May	Jun	Jul	Aug	Sep	Oct	Nov	Dec	Total	%
Other injury	5813	5506	6327	6198	6530	6342	6618	6690	6172	6413	6121	6126	74856	91
Sports injury	156	178	257	208	186	118	157	124	211	179	156	84	2014	2
Overdose and poisoning	153	160	166	157	174	180	162	158	175	190	155	162	1992	2
Assault	141	102	165	146	99	142	179	158	129	137	108	131	1637	2
RTC	111	89	101	100	106	123	114	101	99	112	99	110	1265	2
Deliberate self-harm	32	25	26	39	32	32	36	33	24	30	36	15	360	0
Total	6406	6060	7042	6848	7127	6937	7266	7264	6810	7061	6675	6628	82124	100

* In December 2010, the overdose injury group was removed due to a change in the ED's IT system. Since this time, cases have been categorised into one of the other injury groupings (e.g. 'other injury' / 'deliberate self-harm'). Such cases are however identifiable via another data field, 'presenting complaint'. Where injury group is recorded as 'other injury' and 'presenting complaint' is recorded as overdose/poisoning these cases have been categorised in this table as overdose/poisoning. Please note, during this period, 27 DSH cases also had overdose/poisoning recorded as their presenting complaint.

Table 3: ED attendances by location of incident and month, January to December 2012[^]

Location	Jan	Feb	Mar	Apr	May	Jun	Jul	Aug	Sep	Oct	Nov	Dec	Total	%
Home	4322	4060	4415	4273	4371	4225	4378	4403	4218	4254	4363	4612	51894	63
Public place	885	922	1132	1224	1264	1240	1355	1463	1265	1092	872	859	13573	17
Other	842	691	958	979	1031	1054	1131	1134	916	1246	1020	850	11852	14
Workplace	195	222	272	256	235	277	279	251	226	263	223	197	2896	4
Educational establishment	162	165	260	109	223	141	123	13	185	206	196	110	1893	2
Total	6406	6060	7042	6848	7127	6937	7266	7264	6810	7061	6675	6628	82124	100

[^]There were 16 attendances where location was unknown; these have been included in the total figure.

Table 4: ED attendances by discharge destination and month, January to December 2012^{}**

Discharge destination	Jan	Feb	Mar	Apr	May	Jun	Jul	Aug	Sep	Oct	Nov	Dec	Total	%
Discharged	3329	3216	3832	3640	3886	3920	4043	4157	3793	3824	3622	3593	44855	55
Admitted	1931	1780	1934	2002	2003	1849	1901	1914	1835	1927	1770	1929	22775	28
Referred	658	661	780	671	738	688	796	634	645	752	709	589	8321	10
Incomplete treatment	342	283	335	352	322	305	338	339	319	297	309	246	3787	5
Transferred	85	61	101	88	97	105	111	122	135	151	137	169	1362	2
Other	35	35	38	73	53	54	63	84	70	88	97	65	755	1
Died	26	24	22	22	28	16	14	14	13	22	31	37	269	0
Total	6406	6060	7042	6848	7127	6937	7266	7264	6810	7061	6675	6628	82124	100

**Due to a change in the ED's IT system the coding for the discharge destination field has been updated. This report uses the new coding fields in use since December 2010.

Assaults

Figure 3: Number of ED assault attendances by gender and month, January to December 2012

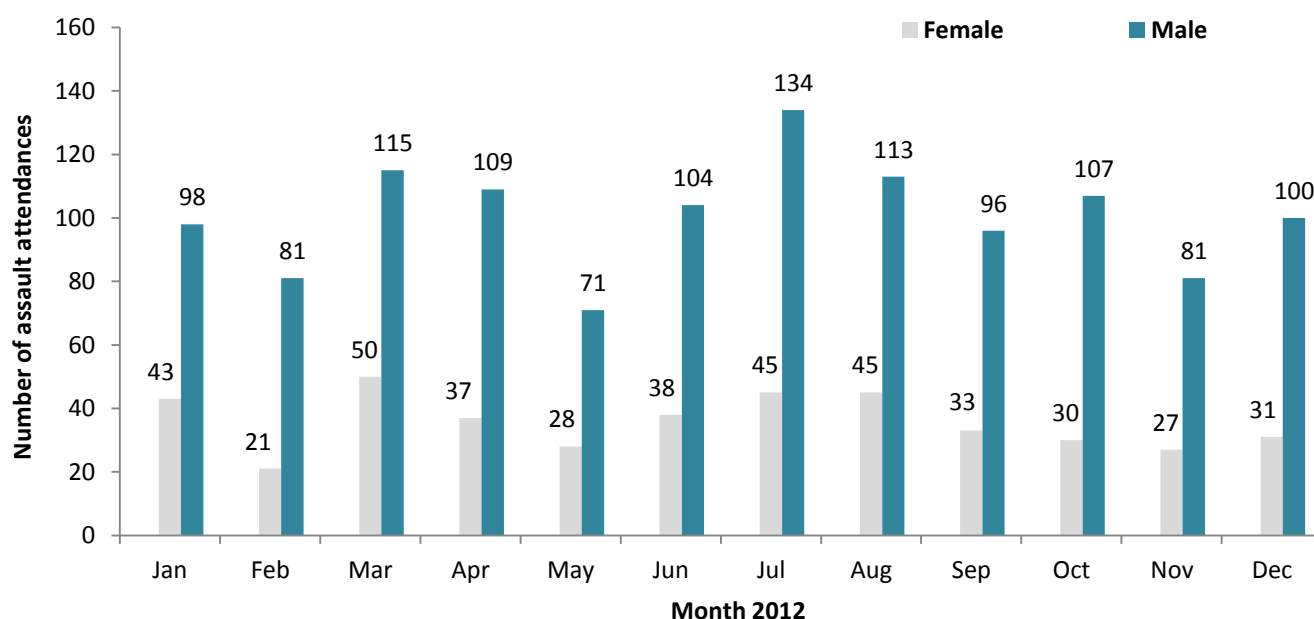


Table 5: ED assault attendances by age group and month, January to December 2012[§]

Age group	Jan	Feb	Mar	Apr	May	Jun	Jul	Aug	Sep	Oct	Nov	Dec	Total	%
5-14	<8	***	11	<9	<6	***	7	***	***	5	<6	<8	68	4
15-29	85	54	91	87	52	69	90	80	71	71	65	82	897	55
30-59	49	44	57	49	39	68	77	71	53	56	35	40	638	39
60 plus	***	***	6	***	***	***	5	***	***	5	***	***	34	2
Total	141	102	165	146	99	142	179	158	129	137	108	131	1637	100

§ There were no assault attendances in the 0-4 age group.

Table 6: ED assault attendances by location of incident and month, January to December 2012

Location	Jan	Feb	Mar	Apr	May	Jun	Jul	Aug	Sep	Oct	Nov	Dec	Total	%
Public place	71	53	91	76	50	60	102	102	75	68	68	67	883	54
Home	33	25	40	37	27	35	45	34	24	35	19	32	386	24
Other	25	16	20	15	12	28	27	15	24	28	14	20	244	15
Workplace	<12	<8	9	<16	5	<16	***	<8	***	***	***	<9	92	6
Educational establishment	***	***	5	***	5	***	***	***	***	***	***	***	32	2
Total	141	102	165	146	99	142	179	158	129	137	108	131	1637	100

Table 7: ED assault attendances by discharge destination and month, January to December 2012

Discharge destination	Jan	Feb	Mar	Apr	May	Jun	Jul	Aug	Sep	Oct	Nov	Dec	Total	%
Discharged	88	70	112	101	70	94	118	107	96	97	73	92	1118	68
Other	24	<16	21	21	<18	16	24	19	<17	22	<19	<23	235	14
Follow-up	21	16	24	17	8	27	26	19	13	13	16	15	215	13
Admitted	8	***	8	7	***	5	11	13	***	5	***	***	69	4
Total	141	102	165	146	99	142	179	158	129	137	108	131	1637	100

Published March 2013

Johnathan Rooney (TIIG Officer), Zara Quigg (Violence & Injury Research Manager)

Centre for Public Health, Liverpool John Moores University, 2nd Floor, Henry Cotton Campus, Liverpool, L3 2ET

Tel: 0151 231 4539 Email: j.rooney@ljmu.ac.uk

Website: www.tiig.info (please note data requests should be made through the website)

¹For other EDs, TIIG reports on injuries only. However, this report includes all attendances at Blackpool Victoria Hospital ED. This is due to the medical and injury attendances being categorised within the patient group 'other'.

²GP=general practitioner, LA=local authority.

³Please note that all numbers less than five have been suppressed (with ***) in line with patient confidentiality; and if there is only one number less than five in a category then two numbers will be suppressed to prevent back calculations from totals.

⁴Please note percentages might not add to one hundred due to rounding.

⁵Due to low numbers firework injuries (n=19) have been included under other injury.